

OPERATIONS PLAN
NORTHERN MARSHALL ISLANDS
RADIOLOGICAL SURVEY

I. Purpose and Objectives

The purpose of this Operations Plan is to outline the field portion of the Northern Marshall Islands Radiological Survey Program and to establish responsibilities and procedures for its execution.

The objectives of this field effort are:

1. To obtain aerial radiological maps of the Northern Marshall Atolls and Islands.
2. To obtain samples of soil, water, plant life and food, adjacent marine waters, and marine and terrestrial life.

II. Responsibilities

Within the Nevada Operations Office, the Assistant for Pacific Operations will be responsible to the Manager for successful accomplishment of the objectives of the Northern Marshall Islands Radiological Survey and will serve as the NV Program Manager responsible for operational control, field operations, and direction of support activities. He will be supported by a Technical Director who will provide technical direction of the aerial, terrestrial, and marine field operations.

III. Organization

The field organization for the Northern Marshall Islands Radiological Survey Program is incorporated in Appendix A.

IV. Survey Execution

The survey will be conducted over a period of three months starting on or about September 11, 1978.

The overall aerial, terrestrial, and marine program is expected to include representatives of:

1. Division of Operational and Environmental Safety (O&ES, DOE/HQ)
2. Nevada Operations Office (NV)
3. EG&G, Las Vegas, NV

4 0 1 1 8 3

5008933

4. Lawrence Livermore Laboratory (LLL), Livermore, CA
5. Environmental Protection Agency (EPA), Las Vegas, NV
6. Brookhaven National Laboratory (BNL), Upton, NY
7. University of Washington (UW), Seattle, WA

A limited number of other scientific parties may be invited to participate on a non-interference basis. Likely candidates are University of Hawaii Mid-Pacific Marine Laboratory (MPML)-sponsored and Bowling Green University.

Sample analysis and dose assessment performed by the Lawrence Livermore Laboratory will continue for several months following the survey and is described in detail in the attached DOE/HQ Radiological Survey Plan, Appendix B.

Initial deployment of equipment will be via a Department of Navy-provided USNS Wheeling from Port Hueneme to Kwajalein with survey personnel boarding at Kwajalein. Three series of 22 days, 22 days, and 33 days are scheduled with personnel rotating after each series. A schedule of the field survey is attached as Appendix B.

V. Public Information

The Manager, NV, is responsible for the implementation of a public information program to inform Trust Territory officials and inhabitants of the Northern Marshall Islands of survey activities and execution schedule. Prior to commencement of survey work, each inhabited island will be visited and individuals briefed on what events will take place. Upon survey completion, island inhabitants will be advised of the completion of that portion of the survey.

VI. Program Funding

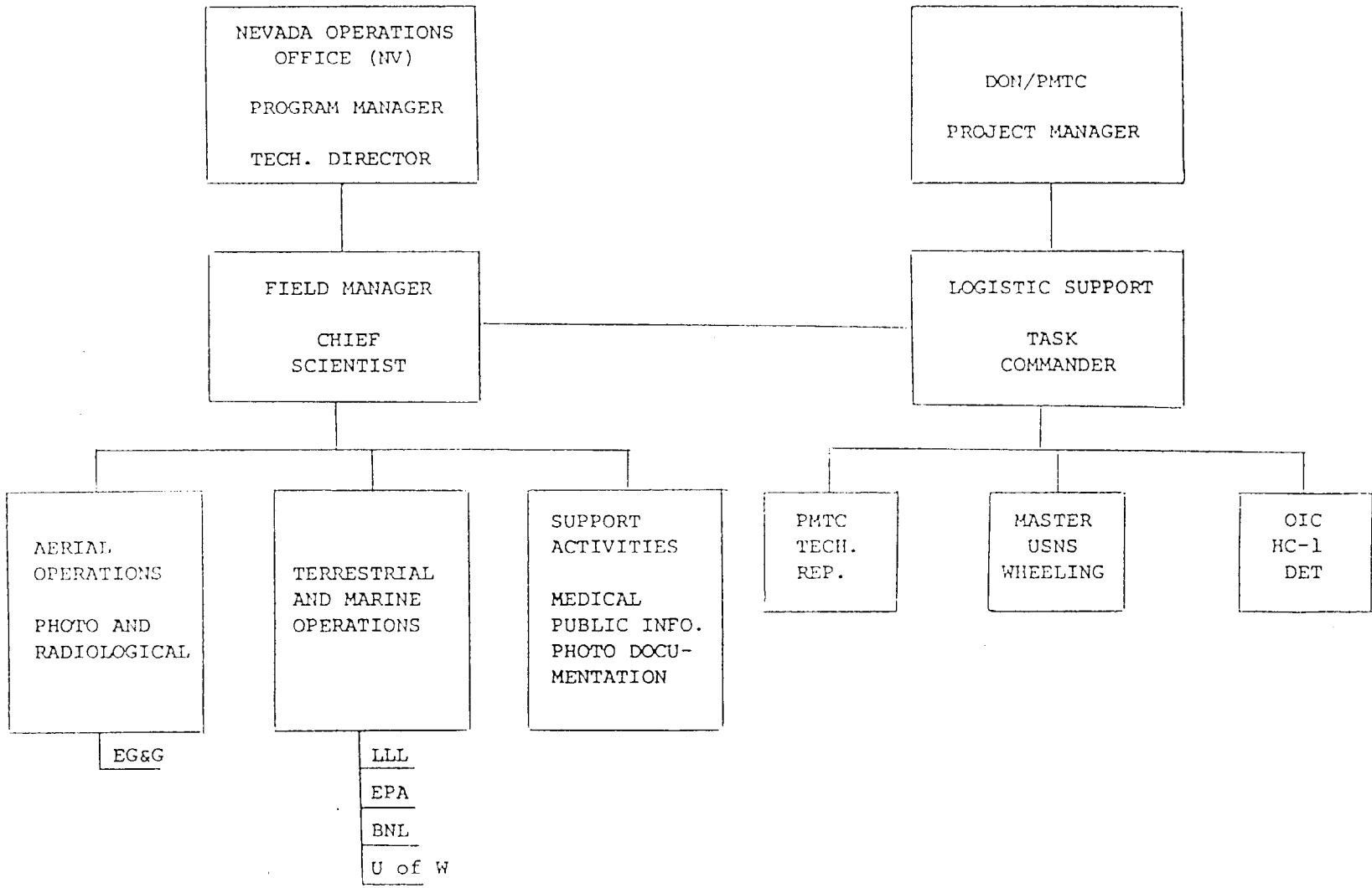
Funding for the Northern Marshall Survey is being provided by the Division of Operational and Environmental Safety. For the FY 1978 phase of the field operations, a total of \$347K has been made available. Cost estimates for the NV portion of the FY 1979 effort are \$540K. In addition, \$150K in capital equipment funding has been provided by O&ES.

Cost will be recorded against the project in budget category GK-01-01-08-4.

Funding associated with the Terrestrial and Marine Survey and the Sample Processing and Analysis activity are being provided to LLL through SAN.

5008934

NORTHERN MARSHALL ISLANDS SURVEY
 FIELD OPERATIONS
 ORGANIZATION CHART



5008935 APPENDIX A